

LEGEND:

- 4 SIGN MARKER
- AUTOMATED FLAGGER ASSISTANCE DEVICE (AFAD)
- TCP CONTROL LOCATION
- ACCESS (6B-A-KEITH WILSON RD-A&B, LICKMAN RD-A&B)
- TYPE 1 BARRICADE

TITLE: TRAFFIC CONTROL LAYOUT
AP 6B-A-KEITH WILSON RD & LICKMAN RD-A&B-SLAT
BPLP TMEP SPREAD 6B

DESIGNED: JAN 25-23
CHECKED: FEB 02-23
DRAWN: PN
PN
DESIGN SPEED: 50/60 km/h
PROJECT NO: 3431.801
DRAWING NO: 3431.801.01
DATE: JAN 25, 2023

REVISIONS	ISSUED FOR IMPLEMENTATION	ISSUED FOR IMPLEMENTATION
0	JAN 25-23	FEB 02-23
1		
2		
3		
4		
5		
6		
7		
8		

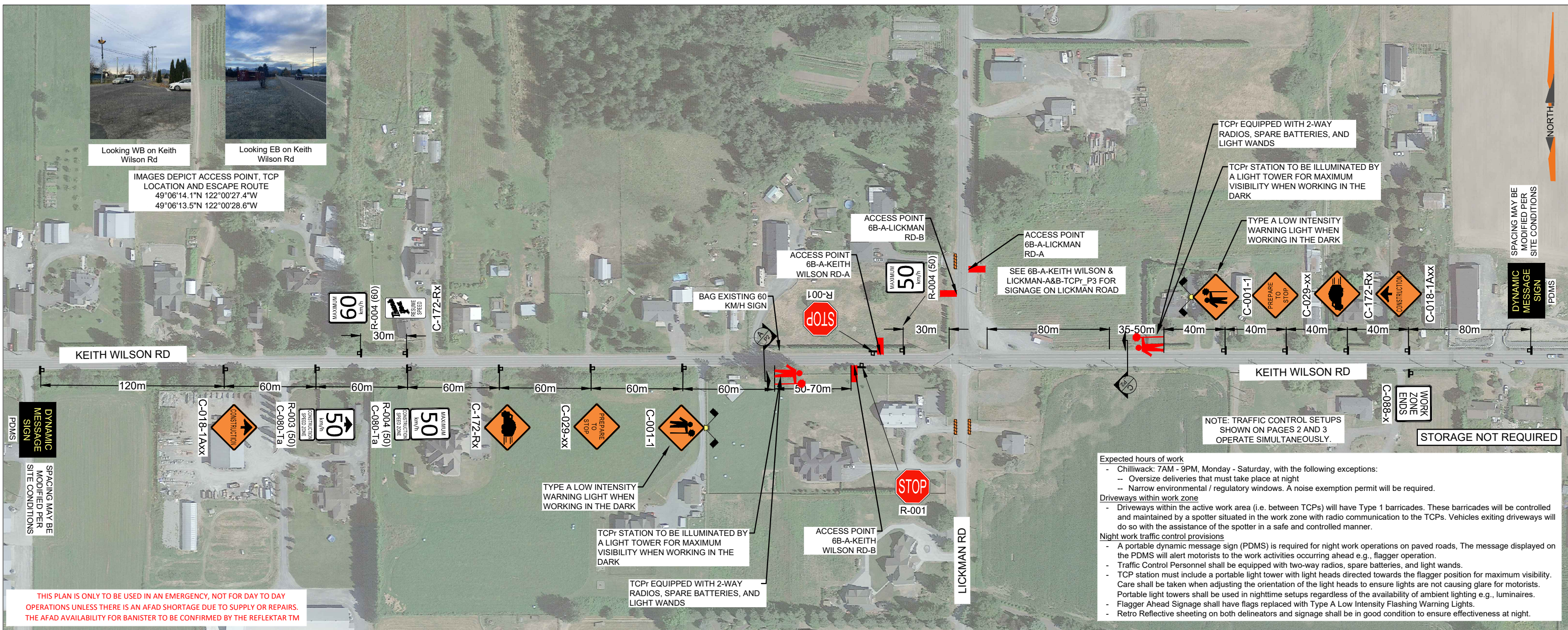
PERMIT TO PRACTICE
WATT CONSULTING GROUP LTD
SIGNATURE _____
DATE _____
PERMIT NUMBER: 1001432
ENGINEERS & GEOSCIENTISTS
BRITISH COLUMBIA

WATT CONSULTING GROUP
Calgary, Edmonton, Lloydminster,
Okanagan, Vancouver, Victoria
WATTCONSULTINGGROUP.COM

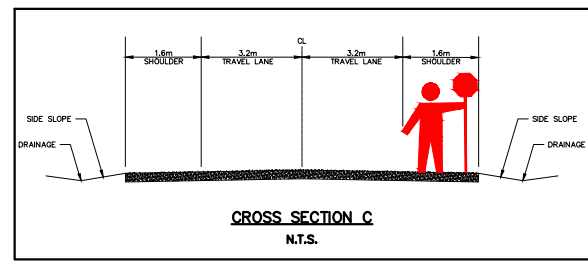
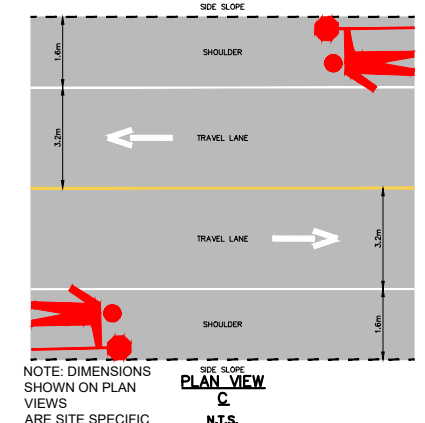
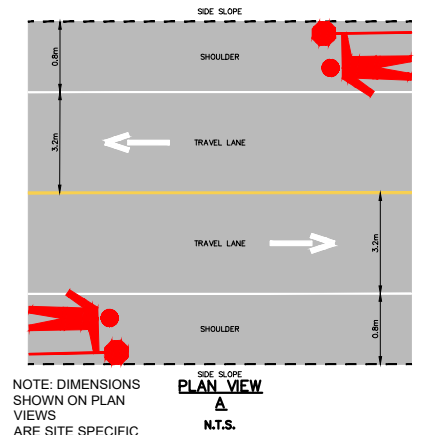
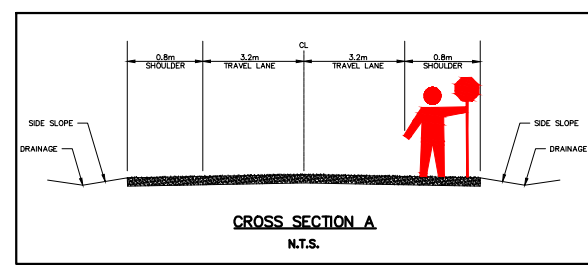
no representations of any kind made by the Design Professional to any party with whom the Design Professional has not entered into contract, and there are no representations of any kind made by the Design Professional to any party with whom the Design Professional has not entered into contract.

PROJECT: 3431.801.01 - TRAFFIC CONTROL LAYOUT FOR AP 6B-A-KEITH WILSON RD & LICKMAN RD-A&B-SLAT
DATE: 2023.01.25
DRAWN BY: PN
CHECKED BY: PN
DESIGNED BY: PN

PROJECT: V:\Project Files\3431 - TMEP Spread 65 - Design\TCP\WAP-6B-A-KEITH WILSON RD-A & B, LICKMAN RD-A & B, TCP, RA, 2023-02-02.dwg
 PLOT DATE: 22/02/2023 9:29 AM
 PLOTTED BY: Kristen Blaker



THIS PLAN IS ONLY TO BE USED IN AN EMERGENCY, NOT FOR DAY TO DAY OPERATIONS UNLESS THERE IS AN AFAD SHORTAGE DUE TO SUPPLY OR REPAIRS. THE AFAD AVAILABILITY FOR BANISTER TO BE CONFIRMED BY THE REFLEKTAR TM



LEGEND:

- SIGN MARKER
- TCP Control Person
- ACCESS (6B-A-KEITH WILSON RD-A&B, LICKMAN RD-A&B)
- TYPE 1 BARRICADE

PERMIT TO PRACTICE
 WATT CONSULTING GROUP LTD
 SIGNATURE _____
 DATE _____
PERMIT NUMBER: 1001432
 ENGINEERS & GEOSCIENTISTS
 BRITISH COLUMBIA

SEAL:

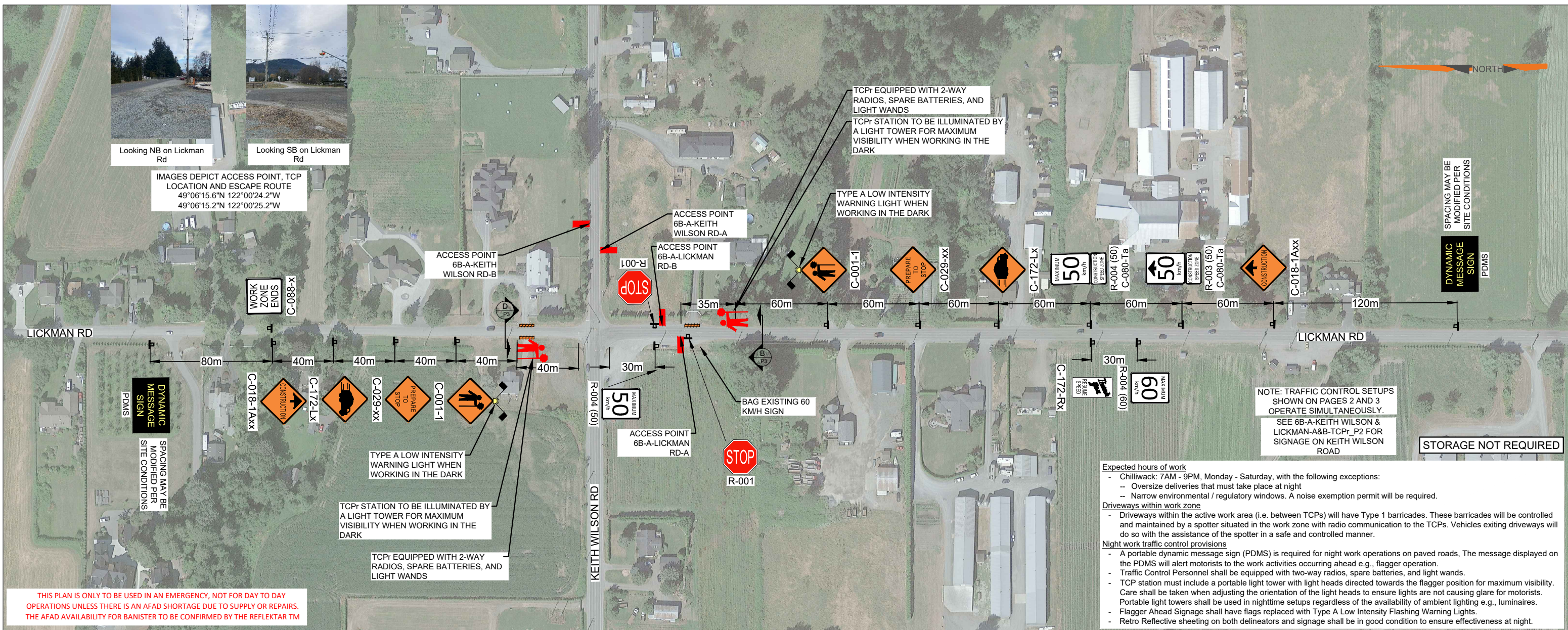
REVISIONS	
0	ISSUED FOR IMPLEMENTATION JAN 20-23
1	ISSUED FOR IMPLEMENTATION JAN 24-23
2	ISSUED FOR IMPLEMENTATION JAN 25-23
3	ISSUED FOR IMPLEMENTATION JAN 27-23
4	ISSUED FOR IMPLEMENTATION FEB 02-23
5	
6	
7	
8	

DESIGNED: JY	DRAWN: JY	CHECKED: KM	APRVD: KM
DESIGN VEHICLE:		DESIGN SPEED: 50/60 km/h	
PROJECT NO: 3431.B01		DRAWING NO: 6B-A-KEITH WILSON & LICKMAN-A&B-TCP_P2	
DATE: JAN 20, 2023		REVISION: 4	

TITLE: **TRAFFIC CONTROL LAYOUT**
 AP 6B-A-KEITH WILSON RD & LICKMAN RD-A&B-TCP
 BPLP TMEP SPREAD 6B

Calgary, Edmonton, Lloydminster, Okanagan, Vancouver, Victoria
 WATTCONSULTINGGROUP.COM

PROJECT: V:\Project Files\3431 - TMEP Spread 6B - Design\TCP\WIP\6B-A-KEITH WILSON RD-A & B, LICKMAN RD-A & B, TCP, RA, 2023-02-02.dwg
 PLOT DATE: 22/2023 9:29 AM
 PLOTTED BY: Kristen Blaker



Looking NB on Lickman Rd
 Looking SB on Lickman Rd
 IMAGES DEPICT ACCESS POINT, TCP LOCATION AND ESCAPE ROUTE
 49°06'15.6"N 122°00'24.2"W
 49°06'15.2"N 122°00'25.2"W

TCPr EQUIPPED WITH 2-WAY RADIOS, SPARE BATTERIES, AND LIGHT WANDS
 TCPr STATION TO BE ILLUMINATED BY A LIGHT TOWER FOR MAXIMUM VISIBILITY WHEN WORKING IN THE DARK

TYPE A LOW INTENSITY WARNING LIGHT WHEN WORKING IN THE DARK

TYPE A LOW INTENSITY WARNING LIGHT WHEN WORKING IN THE DARK
 TCPr STATION TO BE ILLUMINATED BY A LIGHT TOWER FOR MAXIMUM VISIBILITY WHEN WORKING IN THE DARK

TCPr EQUIPPED WITH 2-WAY RADIOS, SPARE BATTERIES, AND LIGHT WANDS

THIS PLAN IS ONLY TO BE USED IN AN EMERGENCY, NOT FOR DAY TO DAY OPERATIONS UNLESS THERE IS AN AFAD SHORTAGE DUE TO SUPPLY OR REPAIRS. THE AFAD AVAILABILITY FOR BANISTER TO BE CONFIRMED BY THE REFLEKTAR TM

NOTE: TRAFFIC CONTROL SETUPS SHOWN ON PAGES 2 AND 3 OPERATE SIMULTANEOUSLY. SEE 6B-A-KEITH WILSON & LICKMAN-A&B-TCPr_P2 FOR SIGNAGE ON KEITH WILSON ROAD

STORAGE NOT REQUIRED

Expected hours of work

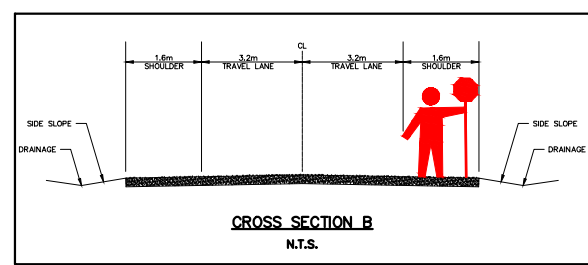
- Chilliwack: 7AM - 9PM, Monday - Saturday, with the following exceptions:
 - Oversize deliveries that must take place at night
 - Narrow environmental / regulatory windows. A noise exemption permit will be required.

Driveways within work zone

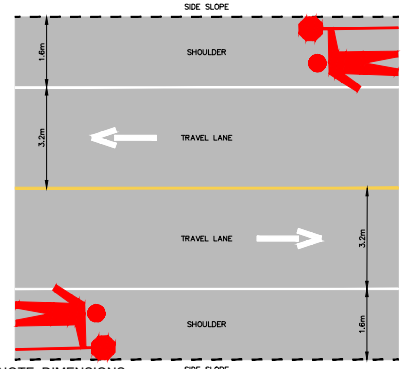
- Driveways within the active work area (i.e. between TCPs) will have Type 1 barricades. These barricades will be controlled and maintained by a spotter situated in the work zone with radio communication to the TCPs. Vehicles exiting driveways will do so with the assistance of the spotter in a safe and controlled manner.

Night work traffic control provisions

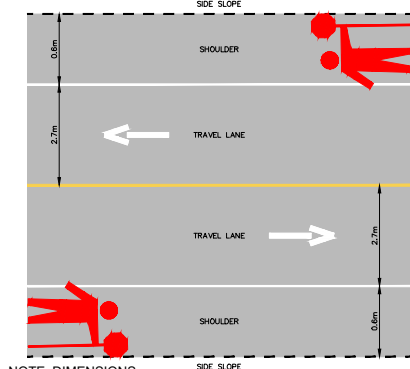
- A portable dynamic message sign (PDMS) is required for night work operations on paved roads. The message displayed on the PDMS will alert motorists to the work activities occurring ahead e.g., flagger operation.
- Traffic Control Personnel shall be equipped with two-way radios, spare batteries, and light wands.
- TCP station must include a portable light tower with light heads directed towards the flagger position for maximum visibility. Care shall be taken when adjusting the orientation of the light heads to ensure lights are not causing glare for motorists. Portable light towers shall be used in nighttime setups regardless of the availability of ambient lighting e.g., luminaires.
- Flagger Ahead Signage shall have flags replaced with Type A Low Intensity Flashing Warning Lights.
- Retro Reflective sheeting on both delineators and signage shall be in good condition to ensure effectiveness at night.



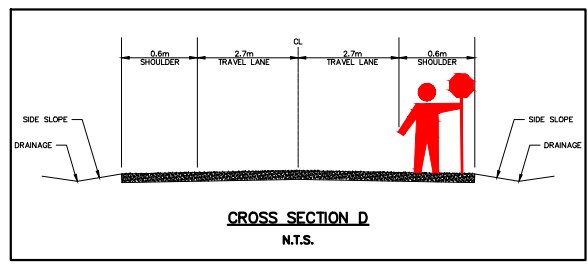
NOTE: DIMENSIONS SHOWN ARE SITE SPECIFIC



NOTE: DIMENSIONS SHOWN ON PLAN VIEWS ARE SITE SPECIFIC



NOTE: DIMENSIONS SHOWN ON PLAN VIEWS ARE SITE SPECIFIC



NOTE: DIMENSIONS SHOWN ARE SITE SPECIFIC

LEGEND:

- SIGN MARKER
- 👤 TCP Control Person
- ACCESS (6B-A-KEITH WILSON RD-A&B, LICKMAN RD-A&B)
- ▬ TYPE 1 BARRICADE

PERMIT TO PRACTICE
 WATT CONSULTING GROUP LTD
 SIGNATURE _____
 DATE _____
PERMIT NUMBER: 1001432
 ENGINEERS & GEOSCIENTISTS
 BRITISH COLUMBIA

SEAL:

REVISIONS	
0	ISSUED FOR IMPLEMENTATION JAN 20-23
1	ISSUED FOR IMPLEMENTATION JAN 24-23
2	ISSUED FOR IMPLEMENTATION JAN 25-23
3	ISSUED FOR IMPLEMENTATION JAN 27-23
4	ISSUED FOR IMPLEMENTATION FEB 02-23
5	
6	
7	
8	

DESIGNED: JY	DRAWN: JY	CHECKED: KM	APRVD: KM
DESIGN VEHICLE:		DESIGN SPEED: 30/60 km/h	
PROJECT NO: 3431.B01		DRAWING NO: 6B-A-KEITH WILSON & LICKMAN-A&B-TCPr_P3	
DATE: JAN 20, 2023		REVISION: 4	

TITLE: **TRAFFIC CONTROL LAYOUT**
 AP 6B-A-KEITH WILSON RD & LICKMAN RD-A&B-TCPr
 BPLP TMEP SPREAD 6B

Calgary, Edmonton, Lloydminster, Okanagan, Vancouver, Victoria
 WATTCONSULTINGGROUP.COM